

CONNECTING 3-RAIL TRACK

<https://shop.atlasrr.com/c-1017-o-3rl-track.aspx>



CONNECTING ATLAS O TRACK TO YOUR EXISTING LAYOUT

We understand that many modelers have already made a substantial investment in track for their existing layouts, so to convert totally to Atlas O is daunting, to say the least. With that in mind, Atlas O track has been carefully engineered to be compatible with most brands of track currently available. The overall height of the track matches Lionel and K-Line O27, Lionel Super-O, Curtis, Ross and GarGraves.

By using the traditional 1/4" thick cork roadbed as a shim, Atlas O readily connects to O gauge tubular track. The Atlas O #6095 Transition Joiner makes connections to tubular track a snap. The illustrations below depict Atlas O track joining to several popular track systems.

Since the Atlas O Track System is based on traditional O gauge geometry, in many cases a one-for-one track section replacement is possible by using transition joiners at each end.

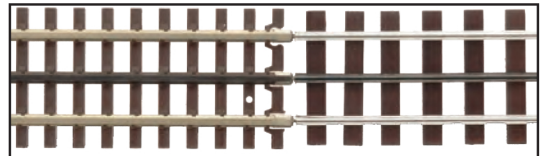
(Since Atlas O track has approximately the same overall height and rail shape as GarGraves and Lionel Super O, it can be joined either with #6096 Transition Joiner or, as shown below, with our standard rail joiners.)

Atlas O Joined to O Gauge Tubular



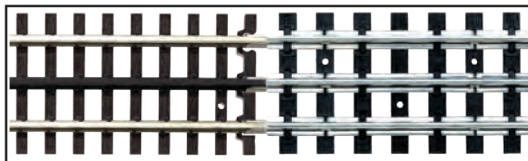
Use #6095 Tubular Transition Joiners. Shim the Atlas O track with 1/4" thick cork roadbed.

Atlas O Joined to GarGraves



Use #6096 GarGraves Transition Joiners.

Atlas O Joined to O27 Tubular



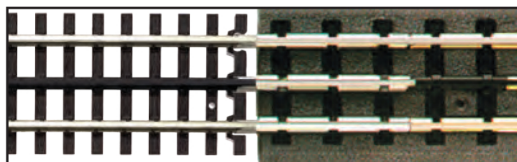
Use #6095 Tubular Transition Joiners. Note: it may be necessary to slightly enlarge the openings in the O27 rail.

Atlas O Joined to Lionel Super O



1. Cut back one metal tie on the Super O track.
2. Trim back the plastic web under the Super O rail.
3. Slide the Atlas O standard rail joiners on the two outer rails. Keep the center joiner on the Atlas O track.
4. Cut off the plastic snap-lock on the Atlas O track.
5. Push the track sections together. Crimp the center rail joiner around the Super O center blade rail.

Atlas O Joined to MTH Track



Use #6095 Tubular Transition Joiners and MTH #40-1011 Adapter Track. Shim the Atlas O track with 1/4" thick cork roadbed.

