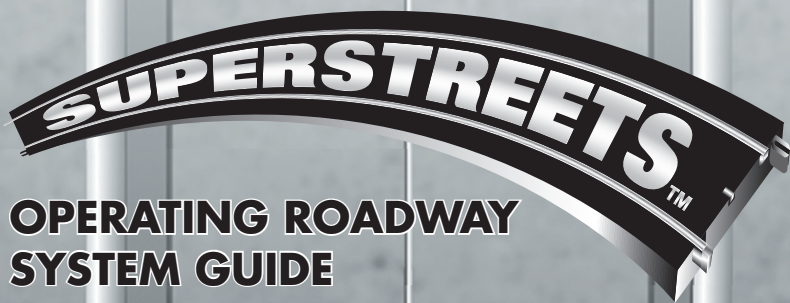


**WARNING: CHOKING HAZARD - SMALL PARTS.  
NOT FOR CHILDREN UNDER 8 YRS.  
ADULT SUPERVISION REQUIRED.**

**6-72-1149-250**



## **OPERATING ROADWAY SYSTEM GUIDE**



**K-LINE BY LIONEL**

©2008 LIONEL L.L.C.  
CHESTERFIELD, MICHIGAN 48051-2493  
UNITED STATES OF AMERICA  
PRINTED IN CHINA

# OPERATING YOUR SUPERSTREETS SET

---

Before assembly and operation, please read through this step-by-step guide to the set-up and operation of your K-Line by Lionel SuperStreets set. The information presented here is important to avoid damage by misuse and should be read by everyone who will be operating this SuperStreets set. Only after reading through this instruction booklet entirely should the SuperStreets set be set-up and the power pack plugged in.

## SET INCLUDES:

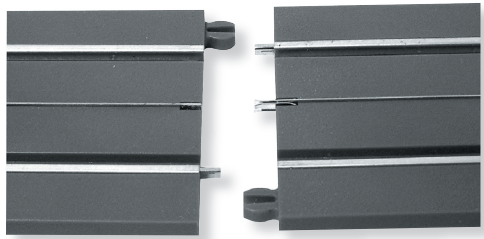
---

- A RailRoadster vehicle or trolley
- SuperStreets Roadway
  - 8 D16 Curves
  - 10" Straights (number varies by set)
  - 4 Straight to Curve Connectors
- Power Pack w/Wires

## ROADWAY ASSEMBLY:

---

The Roadway pieces snap together. Lay them on a flat surface and gently push the two Roadway ends together. Make sure the rail pin and interlock tab of one piece goes into the rail and tab slot of the adjoining piece. Also make sure a metal center rail joiner connects the center rail of the two pieces of Roadway.

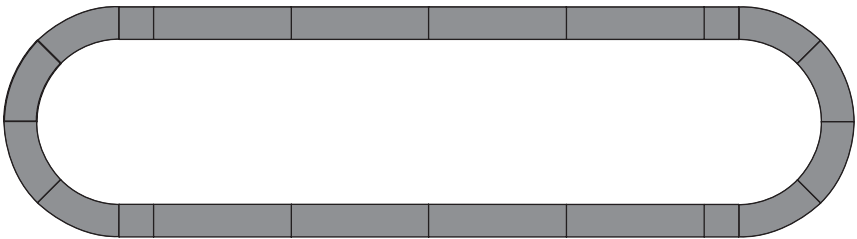


*Figure 1*  
Snap together roadway pieces.

## LAYOUT:

---

The Roadway pieces supplied with this set will make a simple oval with four curved sections at each end.



*Figure 2*  
Oval configuration.

The size of oval will vary depending on the number of 10" Straight Roadways included with this set.

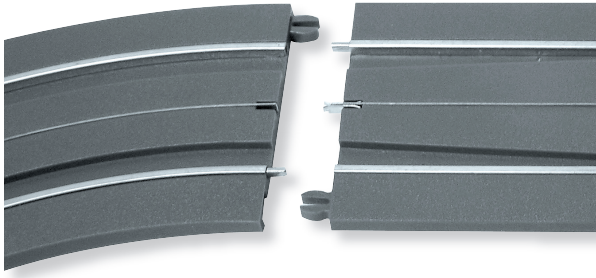


Figure 3  
*Straight to Curve Connector.*

The set includes four Straight to Curve Connectors. These pieces are designed to be used — as the name suggests — as a transition between any straight and curved Roadway. You will notice that the channels in

the Straight to Curve Connectors flare from narrow to wide. Always assemble with narrow channel ends adjoining the straight piece and the wider channel ends adjoining the curve. If you are wondering why, it is to optimize performance of vehicles traveling on SuperStreets. The narrow channels keep vehicles moving with little or no wobble, the wider channels on curved Roadway prevent any binding around curves. The tapered channels of the Straight to Curve Connector ensure smooth travel and eliminate possible 'derailments'.

## SECURING YOUR LAYOUT:

---

You can easily secure your SuperStreets Roadway to a permanent layout. Each Roadway piece has a manhole cover which hides a screw hole. Pop the manhole cover off with a pin or small nail, screw the Roadway down to your layout surface and replace the manhole cover.

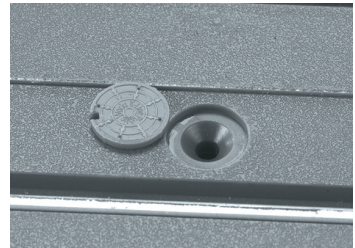


Figure 4  
*Manhole cover detail.*

## EXPANDING YOUR LAYOUT:

---

When you are ready to expand your SuperStreets layout there are a variety of Roadway pieces available to build an interesting and realistic road system. These include wider curves for two lane roads, intersections, Ys for turnouts and loop backs. SuperStreets makes a great addition to any O gauge train layout. And SuperStreets Roadway connects to O gauge track and Lionel FasTrack including grade crossings and connecting transition pieces.

**SuperStreets layout planning and design tools are available FREE on-line at:**  
[http://www.k-line.lionel.com/KbL\\_Products/superstreets\\_railroadster\\_planning\\_guides.cfm](http://www.k-line.lionel.com/KbL_Products/superstreets_railroadster_planning_guides.cfm)

## SUPERSTREETS ROADWAY AVAILABLE FROM YOUR AUTHORIZED LIONEL DEALER:

- 6-21430 SuperStreets D16 Curve (1)
- 6-21432 SuperStreets D16 Curve (8)
- 6-21281 SuperStreets D21 Curve (1)
- 6-21431 SuperStreets 10" Straight (1)
- 6-21434 SuperStreets 10" Straight (8)
- 6-21571 SuperStreets 10" Insulated Roadway Section (2)
- 6-21433 Super Streets 5" Straights (4)
- 6-21282 SuperStreets 2.5" Straight - Curve to Curve Connector (4)
- 6-21261 SuperStreets 2.5" Straight - Straight to Curve Connector (4)
- 6-21286 SuperStreets Intersection (1)
- 6-21266 SuperStreets Intersection (4)
- 6-21287 SuperStreets Y Roadway (1)
- 6-21283 SuperStreets 10" Tubular Track Grade Crossing (1)
- 6-21163 SuperStreets 10" FasTrack Grade Crossing (1)
- 6-21284 SuperStreets 10" Transition to Tubular (1)
- 6-21285 SuperStreets 10" Transition to Tubular (2)
- 6-21164 SuperStreets 10" Transition to FasTrack (1)
- 6-21165 SuperStreets 10" Transition to FasTrack (2)
- 6-22379 SuperStreets Barricade (2)
- 6-21291 SuperStreets Dogbone Expander Pack
- 6-22264 SuperStreets Figure 8 Expander Pack
- 6-21288 0 Gauge Conversion Pins (8 outer/ 4 center)
- 6-21289 SuperStreets Connector Pins (8 outer/ 4 center)
- 6-21290 SuperStreets Hookup Wires (2)

## CONNECTING THE POWER PACK:

Each 10" straight Roadway piece has a pair of connectors installed on the underside. To access the connectors use a hobby knife to cut away a bit of the

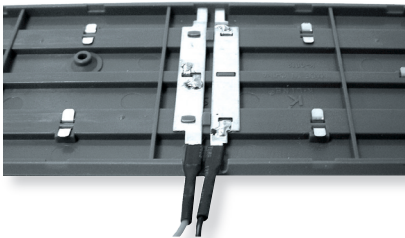


Figure 6  
Spade Connections.

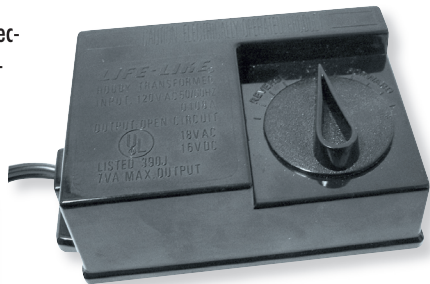


Figure 5  
Transformer.

edge of the Roadway on the side you want to run the wires. You will note that the side walls of the Roadways are thinner at these points so they can easily be cut away. This SuperStreets set includes two

hook-up wires. One end of each wire has a spade connector, the other does not. Slide the spaded end of each wire onto one of the connectors and return the Roadway piece to the layout.

Use a wire stripper to remove the insulation from approximate 3/8" of the other end of each wire. Wrap one stripped wire around the one of the two posts of the power pack.



Figure 7  
Transformer Connections.

**NOTE:** Use the two left posts of the power pack. The right hand posts are for fixed voltage AC accessories only. Use a screwdriver to tighten and secure wire. Be sure the bare wires do not touch each other.

**NOTE:** Because at heart SuperStreets Roadway is functionally 0 gauge three-rail track built into a realistic street, you can operate SuperStreets with any transformer or power pack approved for 0 gauge trains.

### SAFETY TIPS:

Your new power pack is an electrical appliance and should be operated with the same safety rules you would apply to any electrical apparatus.

- Unplug power pack when not in use. DO NOT use the "off" position as a means of shutting off the power pack.
- When unplugging, grasp plug at outlet. DO NOT pull wires to remove plug from wall outlet.
- Examine periodically for conditions such as: frayed or loose electrical cord. If found the power pack should not be used until properly repaired.
- Be careful about the location of the power cord. Be certain that wire does not cross an area where someone could trip over it.
- Keep liquids away from power pack. Should power pack get wet, do not touch it. If possible, turn off power at wall switch or fuse box. If power cord is dry remove plug from outlet.

### POWER PACK OPERATION:

---

The power pack is a simple unit to operate. The speed of the vehicle is controlled by the knob on the front of the power pack. Turning the knob clockwise the increases the speed of the vehicle. The vehicle will slow down when the knob is turned counter clockwise until it eventually reaches the "off" (twelve o'clock) position.

### RAILROADSTER OR TROLLEY:

---

This set includes either a trolley or RailRoadster vehicle. See separate enclosed sheet for operating and maintenance information.

## Limited Warranty/Lionel Service

---

**T**his Lionel product, including all mechanical and electrical components, moving parts, motors and structural components, except for light bulbs, is warranted to the original consumer-purchaser, for **one year** against original defects in materials or workmanship when purchased through an authorized Lionel merchant.

This warranty does NOT cover normal wear and tear, light bulbs, defects appearing in the course of commercial use, or damage resulting from abuse or misuse of the product by the purchaser. Transfer of this product by the original consumer-purchaser to another person voids this warranty. Modification of this product voids this warranty.

Any warranted product which is defective in original materials or workmanship and is delivered by the original consumer-purchaser to Lionel L.L.C. or an authorized Lionel L.L.C. Service Center, together with proof of original purchase will, at the option of Lionel L.L.C., be repaired or replaced, without charge for parts or labor. In the event the defective product cannot be repaired, and a replacement is not available, a refund of the original purchase price will be granted. Any products on which warranty service is sought must be sent freight or postage prepaid, as transportation and shipping charges are not covered by the warranty.

### **In no event shall Lionel L.L.C. be liable for incidental or consequential damages.**

Some states do not allow the exclusion or limitation of incidental or consequential damages, so the above exclusion may not apply to you.

This limited warranty gives you specific legal rights, and you may have other rights which vary from state to state.

### **Instructions for Obtaining Service**

If service for this Lionel L.L.C. product is required, bring the item, along with your dated sales receipt and completed warranty information to the nearest Authorized Lionel Service Center. Your nearest Lionel Service Center can be found by calling 1-800-4-Lionel, or by accessing our Website at [www.lionel.com](http://www.lionel.com).

If you prefer to send your product back to Lionel L.L.C. for repair in Michigan, you must first call 586-949-4100 or FAX 586-949-5429, or write to Customer Service, P.O. Box 748, New Baltimore, MI 48047-0748, stating what the item is, when it was purchased and what seems to be the problem. You will be sent a return authorization letter and label to ensure your merchandise will be properly handled upon receipt.

Once you have received your return authorization and label, make sure that the item is packed to prevent damage during shipping and handling. We suggest that you use the product's original packaging. This shipment must be prepaid and we recommend that it be insured.

Please make sure you have followed all of the above instructions carefully before returning any merchandise for service. You may choose to have your product repaired by one of our Authorized Lionel Service Centers after its warranty has expired. A reasonable service fee will be charged.

### **Warranty Information**

Please complete the information below and keep it, along with your dated sales receipt. You must present this and your dated sales receipt when requesting warranty service.

Name \_\_\_\_\_

Address \_\_\_\_\_

Place of Purchase \_\_\_\_\_

Date of Purchase \_\_\_\_\_

Product Number \_\_\_\_\_

Product Description \_\_\_\_\_



K-LINE BY LIONEL

©2008 LIONEL L.L.C., CHESTERFIELD, MI 48051-2493  
UNITED STATES OF AMERICA  
PRINTED IN CHINA