

Sanborn map source

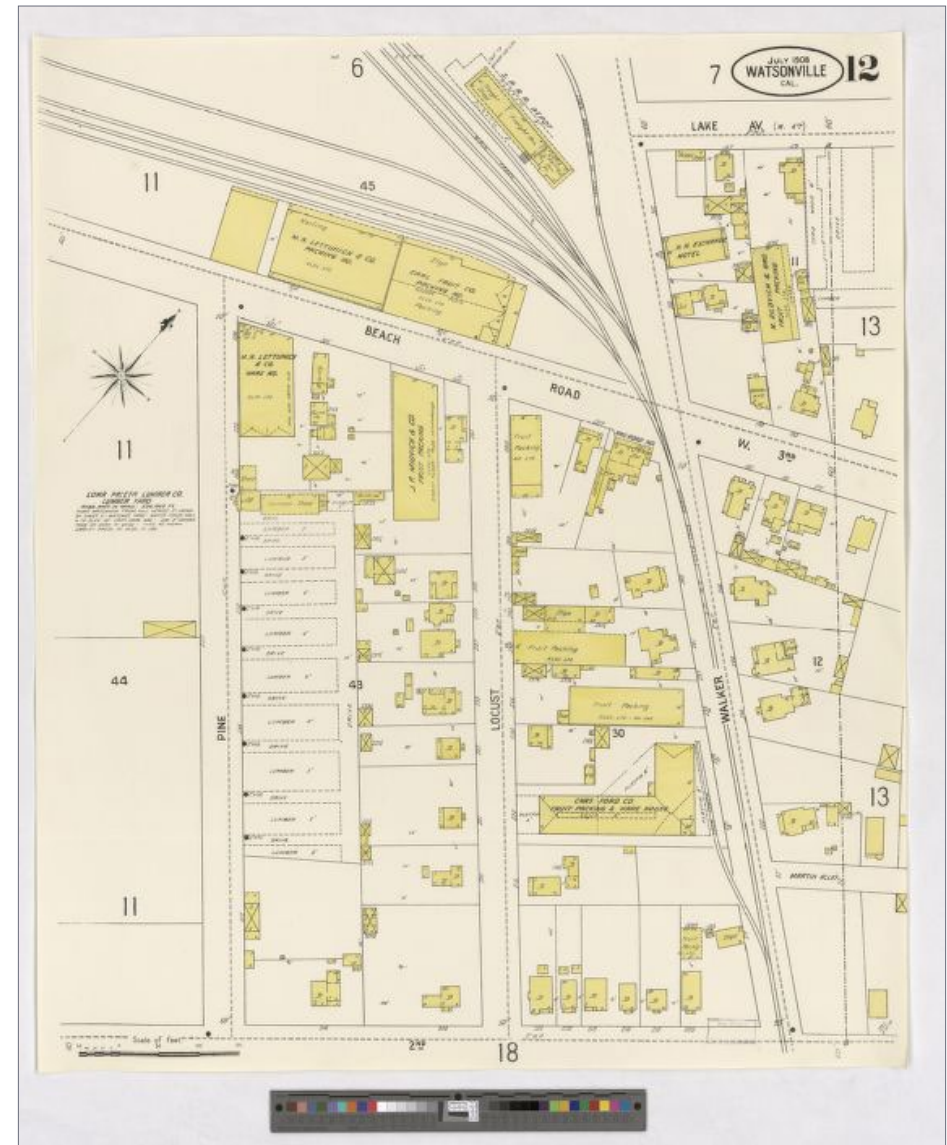
Gsinos: People have talked about Sanborn maps for quite some time. This May 2017 announcement from the Library of Congress, at www.loc.gov/item/prn-17-074/?locr=twloc-new talks about their project to put them all online by 2020.

The news release says:

“The Library of Congress has placed online nearly 25,000 Sanborn Fire Insurance Maps, which depict the structure and use of buildings in U.S. cities and towns. Maps will be added monthly until 2020, for a total of approximately 500,000.

“The online collection now features maps published prior to 1900. The states available include Arizona, Arkansas, Colorado, Delaware, Iowa, Kentucky, Louisiana, Michigan, Nebraska, Nevada, North Dakota, South Dakota, Vermont, Wisconsin and Wyoming. Alaska is also online, with maps published through the early 1960s. By 2020, all the states will be online, showing maps from the late 1880s through the early 1960s.

“The Sanborn Fire Insurance Maps are a valuable resource for genealogists, historians, urban planners, teachers or anyone with a personal connection to a community, street or building. The maps depict more than 12,000 American towns and cities. They show the size, shape and construction materials of dwellings, commercial buildings, factories, and other structures. They indicate both the name and width of streets, and show property boundaries and how individual buildings were used. House and block numbers are identified. They also show the location of water mains, fire alarm boxes, and fire hydrants.



3. A Sanborn Fire Insurance map of Watsonville, CA, shows rail-served businesses. *Library of Congress*

